

**MOESLE
MEAT** EST.
1947

DISTRIBUTION CO.

**MEAT
WITH
US.**

Your trusted partner in wholesale
meat supply and processing.
Founded in Chicago in 1947, we
pride ourselves in the products
and service we provide.

www.moeslemeats.com





OUR HISTORY

1947 • *The Inception of Moesle Meats*

After serving in the Army in WWII, John Moesle, Sr. founded Moesle Meats in 1947 in Chicago, IL. Moesle Meats started as a family-owned business specializing in pork and beef. Their roots trace back to the vibrant Fulton Market.

2017 • *Moesle Meats continues Its Journey*

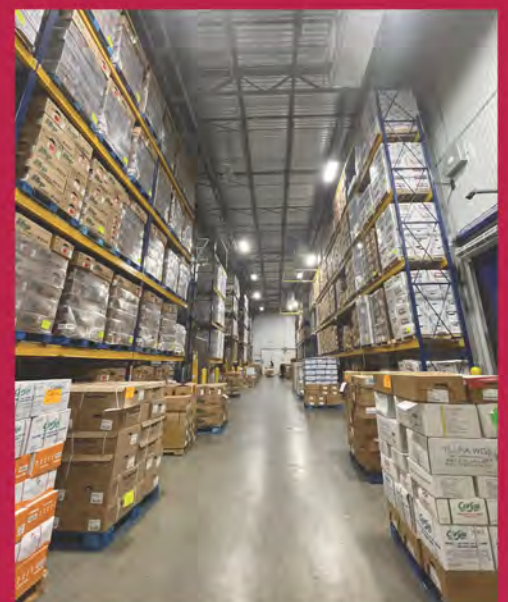
The Moesle family transferred ownership of their enterprise to Joel Janecek, marking a pivotal juncture in the company's journey.

2020 • *Expansion and Diversification*

Moesle Meats embarked on a transformative phase, relocating to a larger facility on Millard St in Chicago. This move facilitated the company's evolution into a comprehensive protein provider, encompassing seafood, pork, poultry, beef, and lamb.

2021 • *Partnership with Queen Foods*

Our sister company is based in Kansas City with a deep history of servicing Asian restaurants in the broader KC Metro and Midwest. Today, they offer a broad selection for both foodservice and retail.





DISTRIBUTION CO.

OUR PRODUCT OFFERING


BEEF
PG 3

A circular icon with a purple border. Inside the circle is a purple silhouette of a cow. Below the silhouette, the word "BEEF" is written in a bold, purple, sans-serif font. At the bottom of the circle, "PG 3" is written in a smaller, purple, sans-serif font.


POULTRY
PG 5

A circular icon with an orange border. Inside the circle is an orange silhouette of a chicken. Below the silhouette, the word "POULTRY" is written in a bold, orange, sans-serif font. At the bottom of the circle, "PG 5" is written in a smaller, orange, sans-serif font.

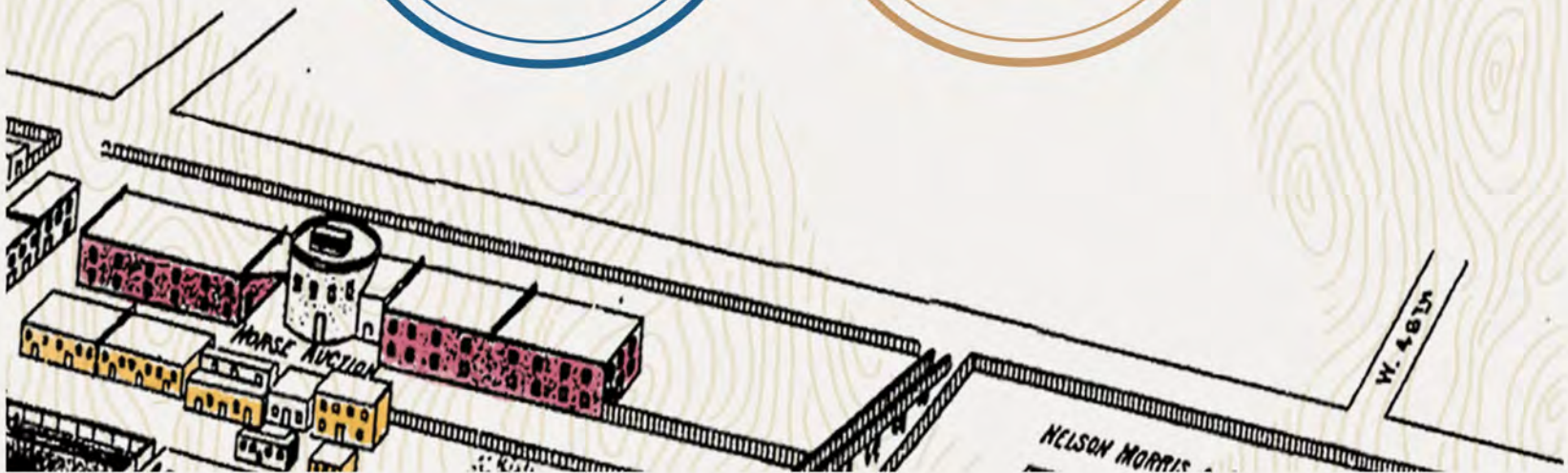

PORK
PG 7

A circular icon with a red border. Inside the circle is a red silhouette of a pig. Below the silhouette, the word "PORK" is written in a bold, red, sans-serif font. At the bottom of the circle, "PG 7" is written in a smaller, red, sans-serif font.


SEAFOOD
PG 9

A circular icon with a blue border. Inside the circle is a blue silhouette of a fish. Below the silhouette, the word "SEAFOOD" is written in a bold, blue, sans-serif font. At the bottom of the circle, "PG 9" is written in a smaller, blue, sans-serif font.


LAMB, VEAL, GOAT
PG 11

A circular icon with an orange border. Inside the circle is an orange silhouette of a cow. Below the silhouette, the words "LAMB, VEAL, GOAT" are written in a bold, orange, sans-serif font. At the bottom of the circle, "PG 11" is written in a smaller, orange, sans-serif font.



BEEF

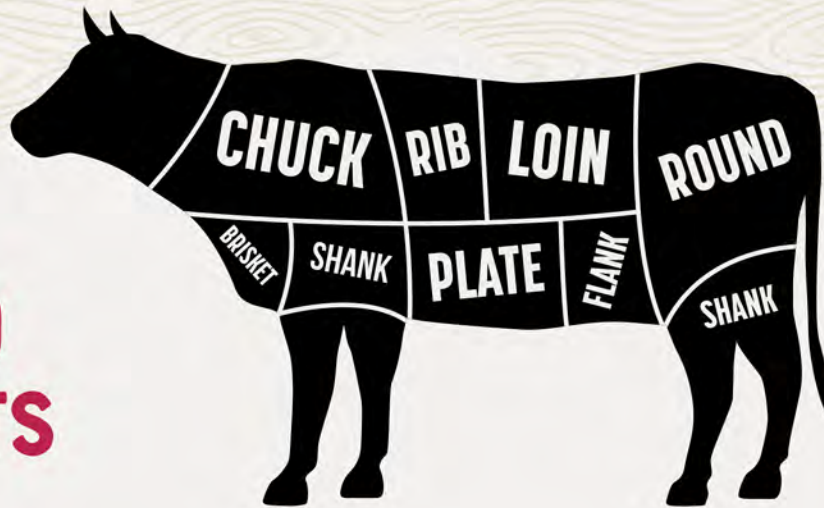
At Moesle Meat, beef is our specialty. We supply beef from all over the world: Mexico, Canada, Australia, New Zealand, Uruguay, and the United States. No matter what grade you are looking for (Utility, No Roll, Select, Choice, Angus, or Prime), or even specialty brands like Star Ranch, you can find it here. Beef products come both fresh and frozen.





DISTRIBUTION CO.

GUIDE TO BEEF CUTS



FRONT QUARTER

- BRISKET** ----- Common uses: Barbeque beef brisket or corned beef
- CHUCK** ----- Common uses: roasts and hamburgers / Chuck cuts: Clods, West Coast Chuck, Chuck Roll
- RIB** ----- Rib cuts: Short Ribs, Rib Eye Steak

HIND QUARTER

- SHANK** ----- Used primarily for stews and soups
- PLATE** ----- Short ribs cut: Best for pot roasting
- FLANK** ----- Flank Steaks cut: Less tender, best with marinade or moist cooking
- LOIN** ----- Shortloin, Tenderloin, Sirloin
- ROUND** ----- Lean and less tender with lower fat marbling, best with marinade

OTHER CUTS

- GRINDS** ----- 73%, 81%, 90%, 93% ground beef
- OFFALS** ----- Variety meat cuts: Edible internal parts of an animal



CORE VENDOR PARTNERS





POULTRY

Our poultry buyers find the best pricing for you, with deep relationships with the top vendors in the country. We closely follow the markets to provide the freshest chicken at the best prices, and deliver it to you seamlessly. In addition to standard chicken cuts, we offer a wide range of duck and turkey products, plus poultry offals.





DISTRIBUTION CO.

GUIDE TO POULTRY CUTS



Poultry available in Fresh, Frozen, Bulk, and Tray Pack. Ask Sales Account Manager for details

- WHOLE** ----- WOG in multiple sizes, fryers, head-on and headless duck Grade A, stewing hens, quail
- BREAST** ----- Boneless/skinless and bone-in chicken breast, chicken tenders, duck breast
- WINGS** ----- Miscut and regular; turkey, chicken, and duck; jumbo, small, and party; CVP and traypack available
- LEGS** ----- Thigh/leg meat, leg quarters, bone-in thighs and legs
- DRUMSTICKS** ----- Jumbo and regular; CVP
- VARIETY** ----- Turkey necks, turkey tails, turkey fries, chicken feet/paws, ground turkey, hearts, gizzards, skin, livers, bone, smoked products



CORE VENDOR PARTNERS





PORK



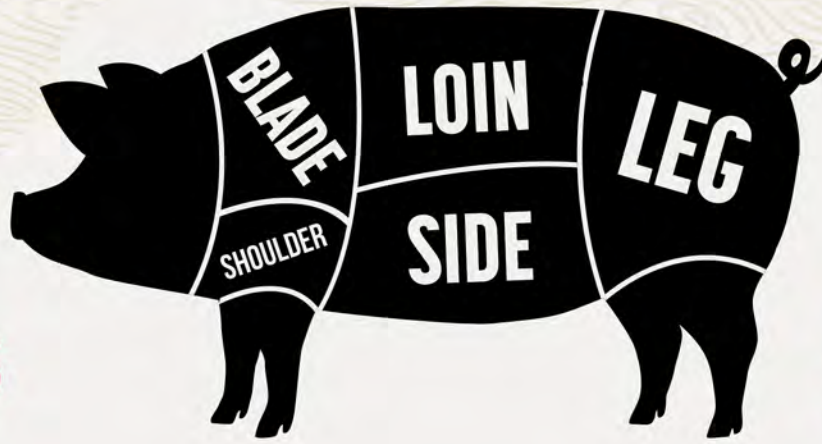
Pork is the core tradition of Moesle Meat, dating back to 1947 when the company first began. There is no cut of pork that we do not supply, whether it is a high-quality rib cut or unique offals. We process pork in-house in our USDA Processing Facility with an expert team of butchers. Ask for our Moesle Meat brand. We are happy to provide certain custom cuts (call for more information).





DISTRIBUTION CO.

GUIDE TO PORK CUTS



BLADE ----- Shoulder Roast and Shoulder Butt

SHOULDER ----- Boston-style is offered. Butt, hocks, cushion meat, and more

LOIN ----- Tenderloin, back ribs, rib roast, and country-style ribs, espinazo

SIDE ----- Spareribs, bacon, belly, and St. Louis-style ribs

LEG ----- Bone-in and boneless hams, smoked hams, ham shanks

VARIETY ----- 72% or 80% trimmings, skin, feet, bones, brains, stomachs, bung, fries, chitterlings, cheek meat, uteri, blood, jowls, tails, casings, neckbones, livers, kidney, snouts, sausage, whole pig



CORE VENDOR PARTNERS





SEAFOOD

Our procurement team has many years of experience sourcing specialty and mainstream seafood products from all over the world, importing from Asia and Latin America. We offer dozens of varieties of shrimp to meet the needs of your shoppers, plus crab, whole fish, shellfish, and more. We also supply a full selection of Panamei branded products – a premium brand with a full slate of items.





DISTRIBUTION CO.

SEAFOOD PRODUCTS



SHRIMP ----- Wide variety of sizes and types included P&N, Tail on and tail off, shell on and shell off, EZ Peel, Head on and head off, and sizes from 110/130 to 13/15

CRAB ----- Snow crab, imitation crab, breaded or non-breaded

WHOLE FISH & CUT FISH ----- Salmon, Snapper, Golden Pompano, Pollock, Catfish, Swai, Tilapia, Tuna, Rex Sole, Smelt, Cobia, Cod, Branzino, Flounder, King Fish, Perch, Whiting

OTHER SHELLFISH ----- Lobster, Scallops, Clams, Oysters, Mussels, Prawn, Crawfish

OCTOPUS & SQUID ----- In a variety of sizes



CORE VENDOR PARTNERS





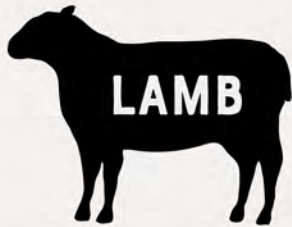
LAMB, VEAL & GOAT

Moesle Meat is your one stop shop for all your protein products, including lamb, veal, and goat. We supply whole carcasses as well as specialty cuts, grounds, and offals. Product may be requested fresh or frozen.





LAMB, VEAL & GOAT PRODUCTS



----- Whole carcass, shoulder, leg, breast, rack, bones, 6-way cut, tripe



----- Ground, scallopini, loin or rib chop, ribeye roast, cube steak, heads, hearts, brain, whole, patties, trimmings



----- Whole carcass, heads, 6-way cut, cubes



OUR PROMISE TO YOU

Nothing is more important to your customers, and to us at Moesle Meats, than the safety and quality of our food products. That's why we maintain strict handling protocols and temperature monitoring in our cold storage facilities.

Our processing facility is USDA certified with adherence to HACCP (Hazard Analysis and Critical Control Point) guidelines. This means you can rely on Moesle Meats to provide high quality products every time – whether we are processing our own Moesle Meat brand, or offering products from one of our supplier partners.



MOESLE MEAT
DISTRIBUTION CO.



DISTRIBUTION CO.

WE DELIVER TO YOU!



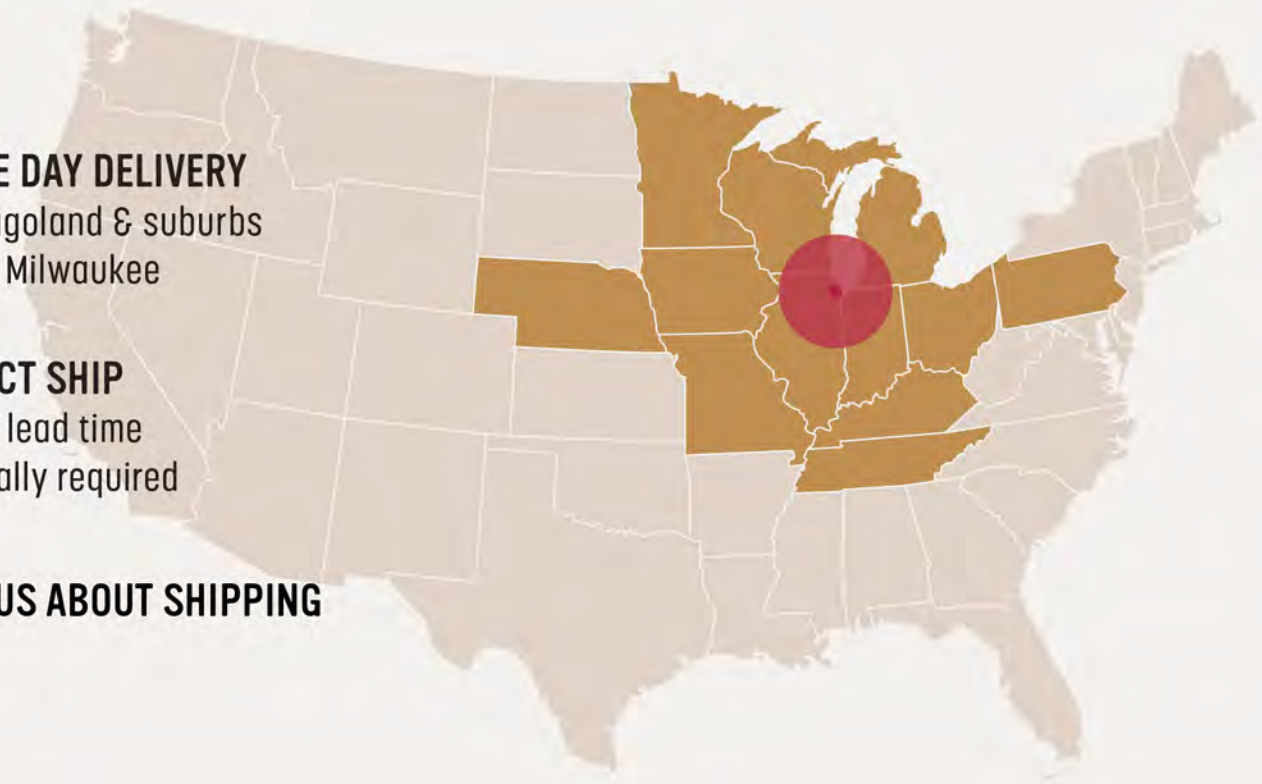
SAME DAY DELIVERY
Chicagoland & suburbs
Up to Milwaukee



DIRECT SHIP
1-day lead time
typically required



ASK US ABOUT SHIPPING



CONTACT US

(773) 847-4900

Se habla español • 我们说普通话

www.moeslemeats.com

HOURS

Monday-Friday: 5am-4pm

Saturday: 6am-11am

Sunday: Closed

LOCATION

5115 S Millard Ave
Chicago, IL 60632



A
WHETSTONE
DISTRIBUTION
COMPANY

At Whetstone Distribution, we bring together historic family-owned businesses, industry know-how, and a commitment to delight our customers. Based in Chicago, we're a dynamic team, forging a path of success in the food distribution industry. unwavering commitment to our customers.